



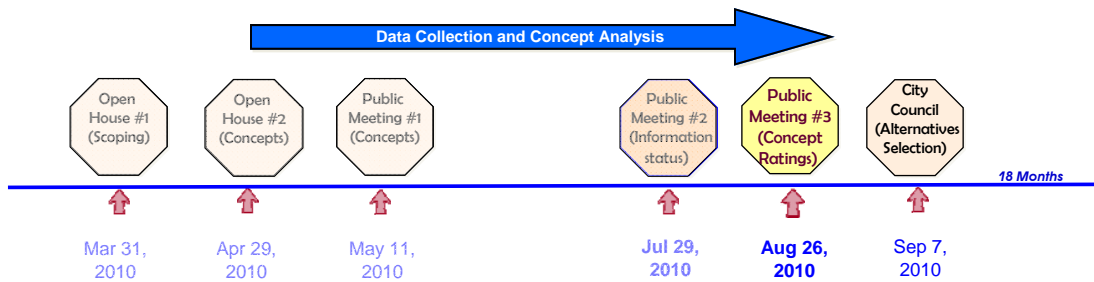
Healdsburg Avenue Bridge over the Russian River



Public Meeting #3

Healdsburg City Council
Chambers
August 26, 2010 6:00 PM

Healdsburg Avenue Bridge Project Process



This Public Meeting is the 5th in a series of Six Public Meetings



HEALDSBURG AVENUE BRIDGE PROJECT - An Investment In Public Safety



Healdsburg Avenue Bridge Project Process



We have one more meeting scheduled for September 7, 2010 before the City Council where we will Present our Recommendations



HEALDSBURG AVENUE BRIDGE PROJECT - An Investment In Public Safety



Healdsburg Avenue Bridge Project Process



- 15 Concepts developed from public input received from two Open Houses
- Concepts presented in “sketch” format at the May 11, 2010 Public Meeting
- July 29 additional information was presented

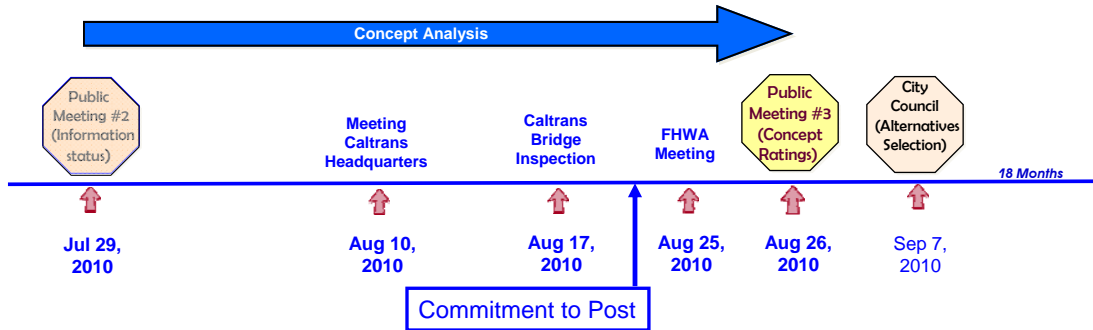
12 Concepts Retain Existing Steel Bridge Structure



HEALDSBURG AVENUE BRIDGE PROJECT - An Investment In Public Safety



Healdsburg Avenue Bridge Project Process



There has been a lot of activity since our last meeting



HEALDSBURG AVENUE BRIDGE PROJECT - An Investment In Public Safety



Healdsburg Avenue Bridge Project Process



Concept Rankings

1. Concept 4A – Existing Bridge Remains on it's current alignment with a new motor vehicle bridge adjacent to the north



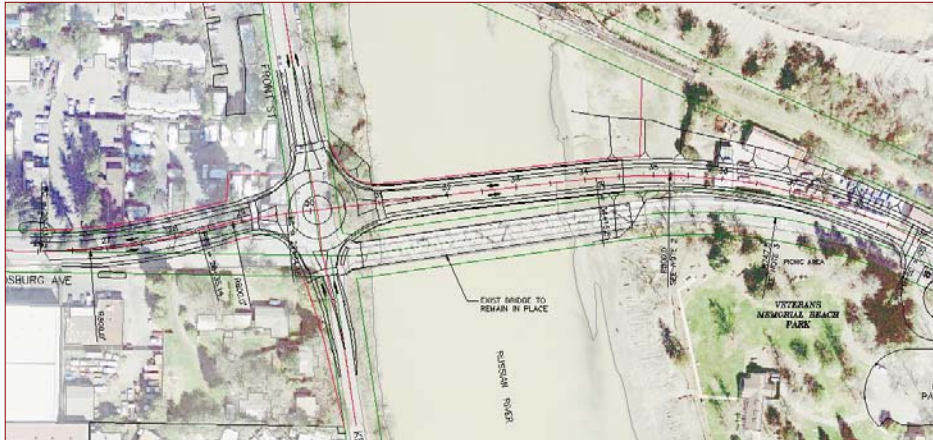
HEALDSBURG AVENUE BRIDGE PROJECT - An Investment In Public Safety



Healdsburg Avenue Bridge Project Process



Concept 4A



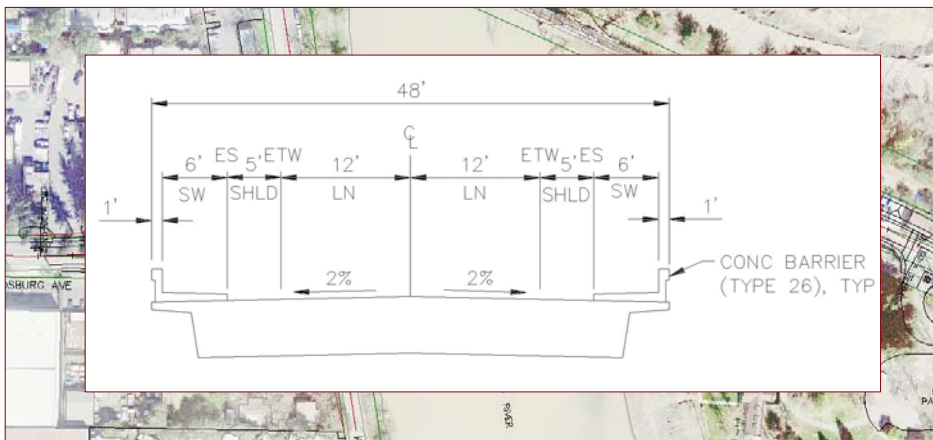
HEALDSBURG AVENUE BRIDGE PROJECT - An Investment In Public Safety



Healdsburg Avenue Bridge Project Process



Concept 4A



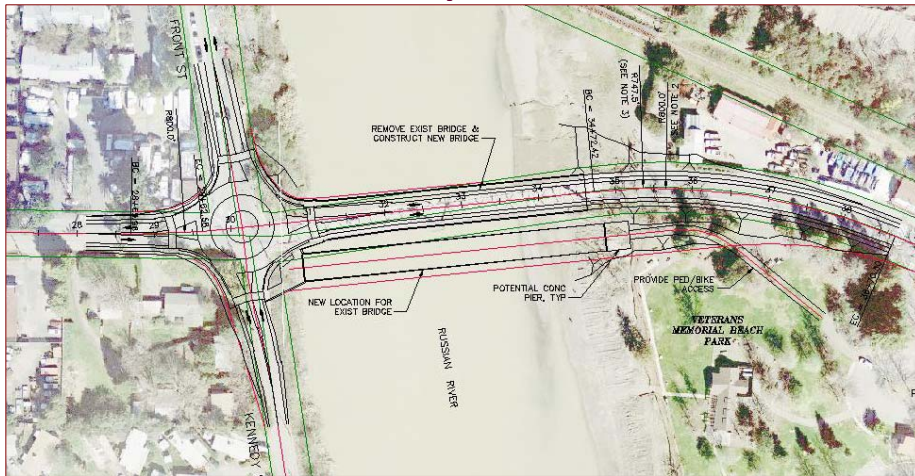
HEALDSBURG AVENUE BRIDGE PROJECT - An Investment In Public Safety



Healdsburg Avenue Bridge Project Process



Concept 5B



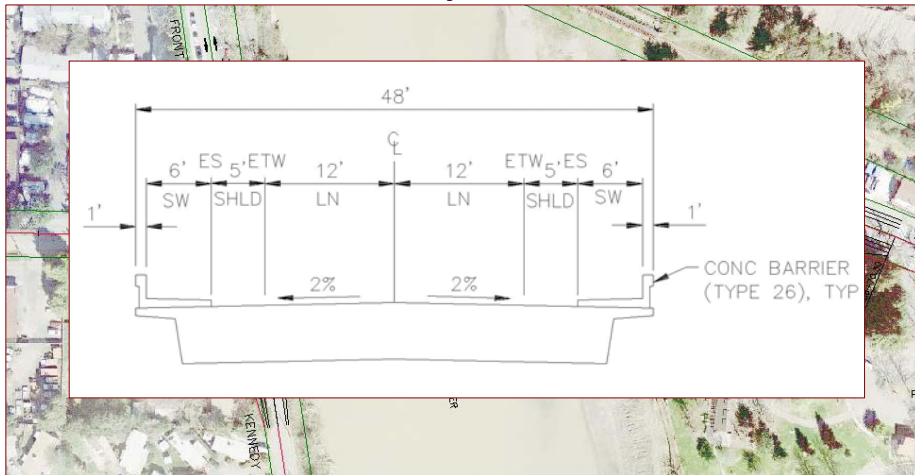
HEALDSBURG AVENUE BRIDGE PROJECT - An Investment In Public Safety



Healdsburg Avenue Bridge Project Process



Concept 5B



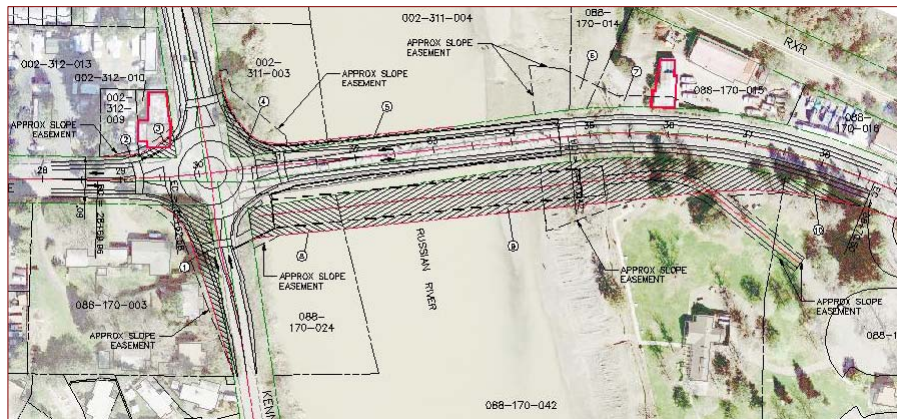
HEALDSBURG AVENUE BRIDGE PROJECT - An Investment In Public Safety



Healdsburg Avenue Bridge Project Process



Concept 5B



HEALDSBURG AVENUE BRIDGE PROJECT - An Investment In Public Safety



Healdsburg Avenue Bridge Project Process



Concept Rankings

1. Concept 4A – Existing Bridge Remains on it's current alignment with a new motor vehicle bridge adjacent to the north
2. Concept 5B – New motor vehicle bridge on current roadway alignment with historic Bridge relocated immediately downstream.

3. Concept 3B - Remove the Historic Bridge and replace with new motor vehicle bridge on current roadway alignment



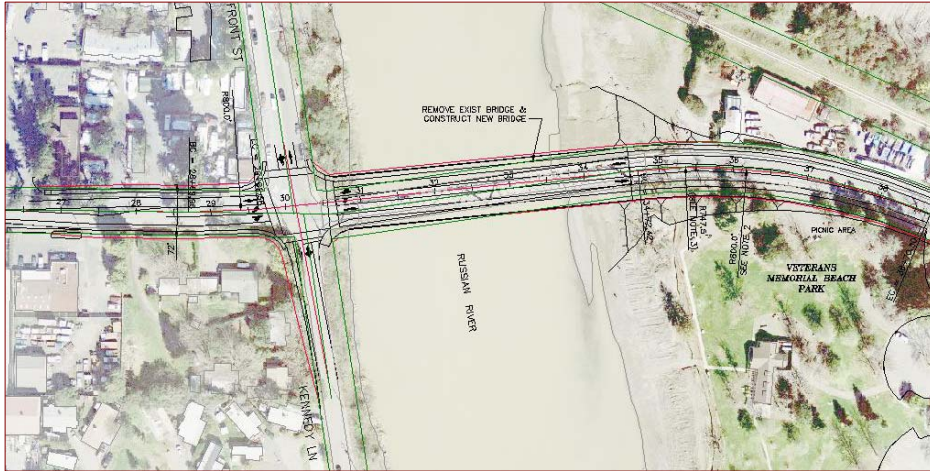
HEALDSBURG AVENUE BRIDGE PROJECT - An Investment In Public Safety



Healdsburg Avenue Bridge Project Process



Concept 3B



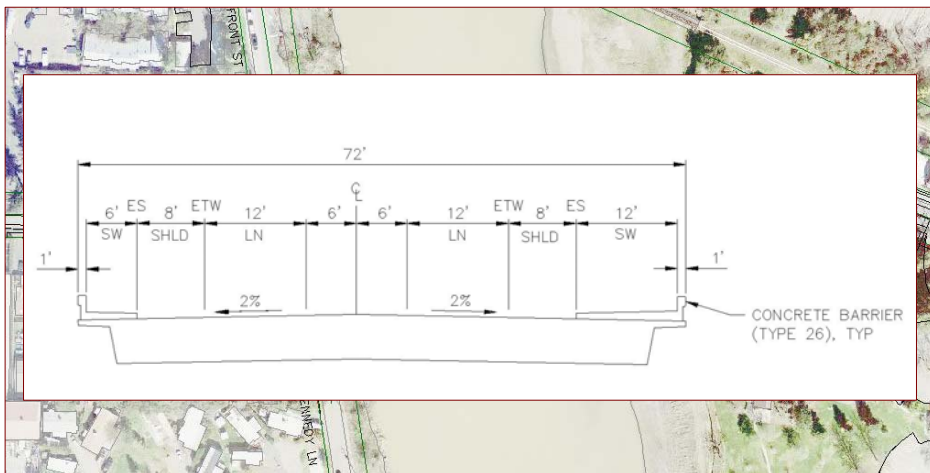
HEALDSBURG AVENUE BRIDGE PROJECT - An Investment In Public Safety



Healdsburg Avenue Bridge Project Process



Concept 3B



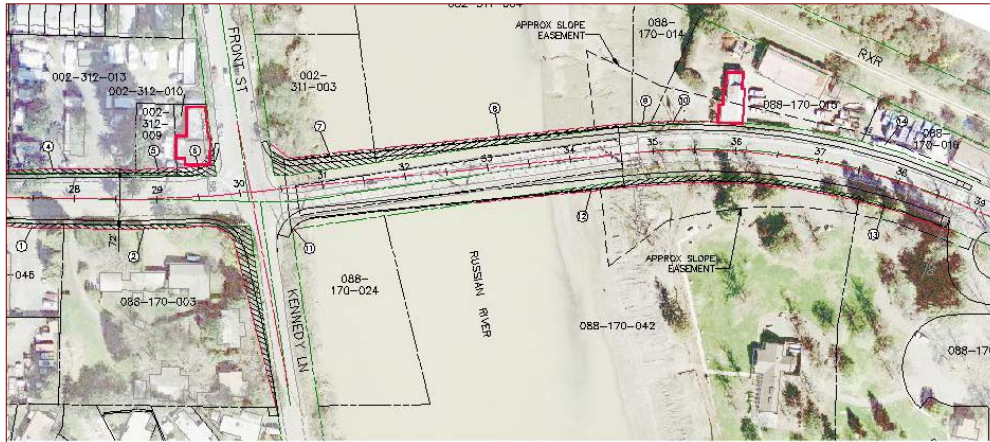
HEALDSBURG AVENUE BRIDGE PROJECT - An Investment In Public Safety



Healdsburg Avenue Bridge Project Process



Concept 3B



HEALDSBURG AVENUE BRIDGE PROJECT - An Investment In Public Safety



Healdsburg Avenue Bridge Project Process



Concept Rankings

1. Concept 4A – Existing Bridge Remains on it's current alignment with a new motor vehicle bridge adjacent to the north
2. Concept 5B – New motor vehicle bridge on current roadway alignment with historic Bridge relocated immediately downstream.

~~3. Concept 3B - Remove the Historic Bridge and replace with new motor vehicle bridge on current roadway alignment~~



HEALDSBURG AVENUE BRIDGE PROJECT - An Investment In Public Safety



Healdsburg Avenue Bridge Project Process



Concept Rankings

1. Concept 4A – Existing Bridge Remains on it's current alignment with a new motor vehicle bridge adjacent to the north
2. Concept 5B – New motor vehicle bridge on current roadway alignment with historic Bridge relocated immediately downstream.
- ~~3. Concept 3B - Remove the Historic Bridge and replace with new motor vehicle bridge on current roadway alignment~~
3. Concept 5A – New motor vehicle bridge on current roadway alignment with historic Bridge relocated immediately upstream



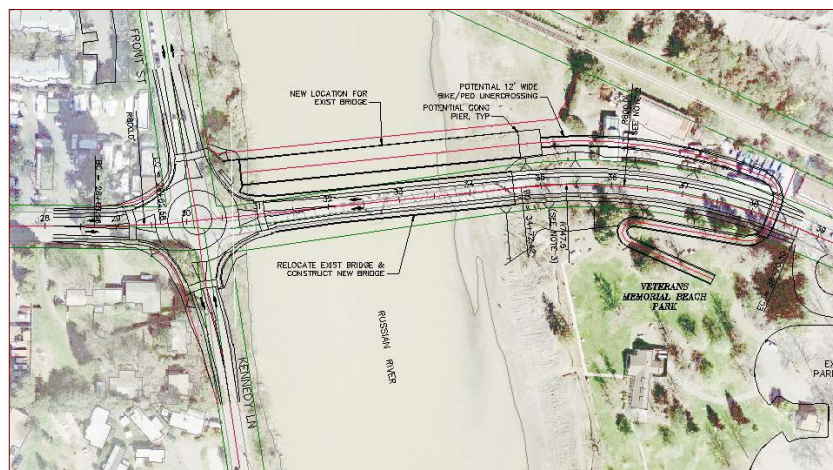
HEALDSBURG AVENUE BRIDGE PROJECT - An Investment In Public Safety



Healdsburg Avenue Bridge Project Process



Concept 5A



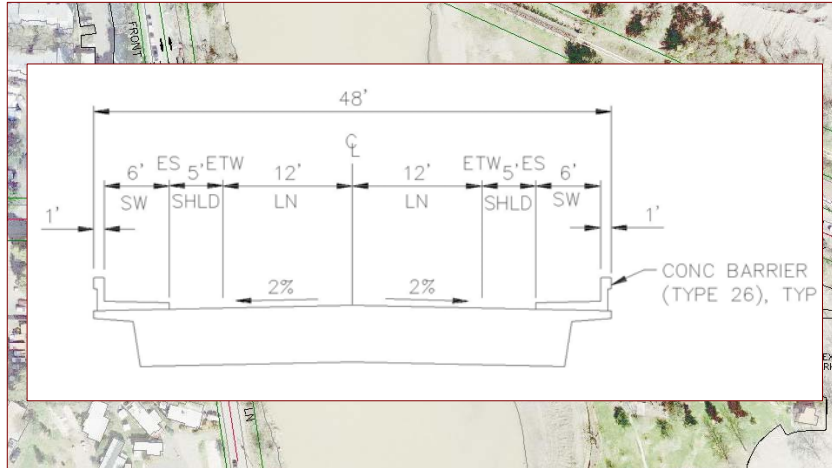
HEALDSBURG AVENUE BRIDGE PROJECT - An Investment In Public Safety



Healdsburg Avenue Bridge Project Process



Concept 5A



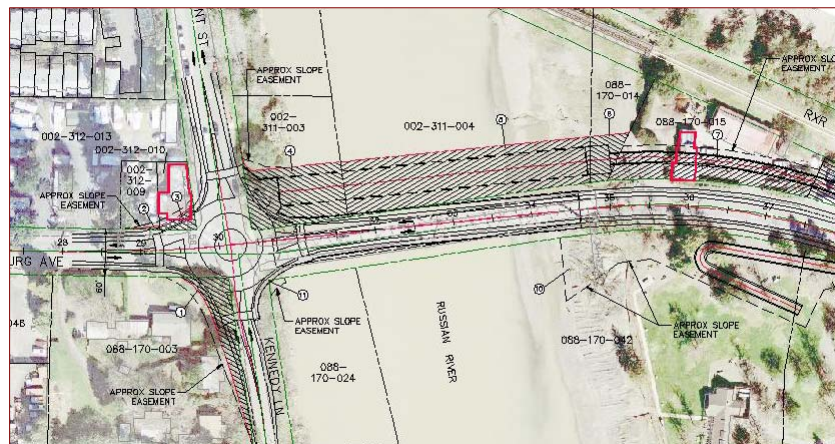
HEALDSBURG AVENUE BRIDGE PROJECT - An Investment In Public Safety



Healdsburg Avenue Bridge Project Process



Concept 5A



HEALDSBURG AVENUE BRIDGE PROJECT - An Investment In Public Safety



Healdsburg Avenue Bridge Project Process



Recommendation to the City Council

PREFERRED ALTERNATIVE

Concept 4A – Existing Bridge Remains on it's current alignment with a new motor vehicle bridge adjacent to the north

ALTERNATIVES TO BE INCLUDED

Concept 5B – New motor vehicle bridge on current roadway alignment with historic Bridge relocated immediately downstream.

Concept 5A – New motor vehicle bridge on current roadway alignment with historic Bridge relocated immediately downstream

Concept 2A – Rehabilitation of Historic Bridge



HEALDSBURG AVENUE BRIDGE PROJECT - An Investment In Public Safety



Healdsburg Avenue Bridge Project Process



Overview of
Healdsburg Avenue Bridge over the Russian River
Concept Selection Analysis Matrix (CSAM)
Results Summary
August 23, 2010
(Revised August 25, 2010)

CSAM Process
City of Healdsburg

Page 1
R148RPT002.doc



HEALDSBURG AVENUE BRIDGE PROJECT - An Investment In Public Safety



Healdsburg Avenue Bridge Project Process



PROJECT PURPOSE CHECKLIST

Criteria

- Address Public Safety
- Consistent with General Plan
- Facilitate Goods Movement
- Improve Public Transportation Opportunities
- Minimize Negative Impacts to Veterans Memorial Park
- Enhance Pedestrian and Bicycle Access and Facilities

Project Purpose Rating

Relative Conformance	Point
Strongly Meets	10
Adequately Meets	7
Somewhat Meets	4
Does NOT Meet	0



HEALDSBURG AVENUE BRIDGE PROJECT - An Investment In Public Safety



Healdsburg Avenue Bridge Project Process



Purpose and Need Rating Matrix

Criteria	Concept No.														
	1A	1B	2A	2B	2C	2D	2E	3A	3B	4A	4B	4C	4D	5A	5B
	Concept Purpose and Need Ratings														
Address Public Safety	0.0	2.7	4.3	4.8	4.8	4.8	6.8	10.0	10.0	10.0	9.5	8.5	7.5	8.0	10.0
Consistent with General Plan	0.7	0.7	2.7	2.7	2.7	3.8	7.8	10.0	9.5	10.0	10.0	4.8	5.3	10.0	10.0
Facilitate Goods Movement	2.0	0.0	3.3	2.8	2.8	3.3	7.8	10.0	10.0	10.0	10.0	6.5	7.0	10.0	10.0
Improve Public Transportation Opportunities	0.0	0.0	0.7	1.3	1.3	2.5	7.8	10.0	10.0	10.0	9.5	7.0	7.0	9.5	9.0
Minimize Negative Impacts to Veterans Memorial Park	10.0	9.5	9.5	8.5	8.5	7.5	5.3	6.5	6.5	7.5	3.3	8.0	8.0	7.0	4.8
Enhance Pedestrian and Bicycle Access and Facilities	0.0	3.0	0.0	2.0	2.0	2.5	7.3	10.0	10.0	10.0	8.5	9.0	9.0	8.5	9.5
Total	12.7	15.8	20.5	22.2	22.2	24.5	43.0	56.5	56.0	57.5	50.8	43.8	43.8	53.0	53.3
Raw P&N ratings shown above represent the Project Development Team average ratings. Purpose and Need (P&N) concept adjustment factors, shown below, were derived through the total rating of each concept, divided by the highest rated concept's total rating.															
P&N Adjustment Factor	0.22	0.28	0.36	0.39	0.39	0.43	0.75	0.98	0.97	1.00	0.88	0.76	0.76	0.92	0.93



HEALDSBURG AVENUE BRIDGE PROJECT - An Investment In Public Safety



Healdsburg Avenue Bridge Project Process



Criteria Relative Weighing Matrix

RELATIVE WEIGHING WORKSHEET										
Criteria	Stakeholder/Organization									
	Open House #1	City Council	County Transit	Emergency Services	County Parks	School District	Chamber of	Total	Average	Factor
1. Historic Preservation	4.63	3.75	3.00	1.00	5.00	1.00	4.00	22.4	3.20	1.00
2. Public Safety	4.04	4.75	5.00	5.00	5.00	4.00	5.00	32.8	4.68	1.47
3. Environmental Sensitivity	3.94	3.75	3.00	3.50	5.00	4.00	4.00	27.2	3.88	1.22
4. Right of Way Impacts	3.33	3.50	3.00	3.50	5.00	2.00	4.00	24.3	3.48	1.09
5. Constructability	3.24	3.00	4.00	3.50	3.00	4.00	4.00	24.7	3.53	1.11
6. Design Standards Conformance	3.06	3.25	3.00	3.00	3.00	4.00	3.00	22.3	3.19	1.00
7. Cost	4.13	4.75	3.00	4.00	3.00	2.00	4.00	24.9	3.55	1.12
8. Transportation Operations	3.80	3.50	5.00	5.00	3.00	5.00	4.00	29.3	4.19	1.31
9. Funding Capability (City Contribution)	4.25	4.75	3.00	4.00	3.00	4.00	5.00	28.0	4.00	1.26
Total/Average								235.9	33.70	



HEALDSBURG AVENUE BRIDGE PROJECT - An Investment In Public Safety



Healdsburg Avenue Bridge Project Process



Historic Preservation	
Historic Impacts	Point Value
No Impact	10
Minimal (or minor)	7
Moderate Impact	4
Substantial Impact	0



HEALDSBURG AVENUE BRIDGE PROJECT - An Investment In Public Safety



Healdsburg Avenue Bridge Project Process



Historic Preservation Rating Matrix

HISTORIC PRESERVATION EVALUATION															
Criteria	Concept No.														
	1A	1B	2A	2B	2C	2D	2E	3A	3B	4A	4B	4C	4D	5A	5B
Historic Impacts	10	10	10	10	10	10	2	0	0	5	6	10	10	7	6
Total Score	10	10	10	10	10	10	2	0	0	5	6	10	10	7	6



HEALDSBURG AVENUE BRIDGE PROJECT - An Investment In Public Safety



Healdsburg Avenue Bridge Project Process



PUBLIC SAFETY	
Criteria	
	Motor Vehicle Traffic
	Pedestrian traffic
	Bicycle Traffic
	Emergency Response

Safety		
Level of Improvement		Point Value
Substantial	Improves public safety at all locations	10
Moderate	Improves public safety at some but not all locations	7
Minimal (minor)	Minimal or minor improvement to public safety	4
No Change	Provides no improvements to public safety	0



HEALDSBURG AVENUE BRIDGE PROJECT - An Investment In Public Safety



Healdsburg Avenue Bridge Project Process



Public Safety Rating Matrix

PUBLIC SAFETY IMPROVEMENTS															
Criteria	Concept No.														
	1A	1B	2A	2B	2C	2D	2E	3A	3B	4A	4B	4C	4D	5A	5B
Motor Vehicle Traffic	0	0	4	4	7	7	10	10	10	10	10	7	7	10	10
Pedestrian Traffic	0	7	0	0	0	0	10	10	10	10	7	10	10	7	10
Bicycle Traffic	0	10	0	0	0	4	10	10	10	10	10	10	10	10	10
Emergency Response	0	0	7	0	4	4	10	10	10	10	10	4	7	10	10
Total Score	0	17	11	4	11	15	40	40	40	40	37	31	34	37	40
Total Calibrated Score (10 High)	0	4.3	2.8	1	2.75	3.75	10	10	10	10	9.25	7.75	8.5	9.25	10



HEALDSBURG AVENUE BRIDGE PROJECT - An Investment In Public Safety



Healdsburg Avenue Bridge Project Process



Criteria
Cultural Resources¹:
Archeology
Built Environment & Landscapes
Biological Resources
Wild Life, Botany, Wetlands
Fisheries
Community Impacts
Parks - Section 4(f)
Visual Resources
Noise

Environmental Impact	
Level of Impact	Point
No Impact	10
Minimal (or minor)	7
Moderate Impact	4
Substantial Impact	0



HEALDSBURG AVENUE BRIDGE PROJECT - An Investment In Public Safety



Healdsburg Avenue Bridge Project Process



Environmental Rating Matrix

ENVIRONMENTAL SENSITIVITY																	
Criteria	Importance Weighting		Concept No.														
			1A	1B	2A	2B	2C	2D	2E	3A	3B	4A	4B	4C	4D	5A	5B
Cultural Resources¹	3.2	15.5%	10	8.5	9	8	8	8	9	7.5	7.5	6	6	6	6	6	6
Archeology	3.6	17.2%	10	10	8	8	8	8	8	5	5	5	5	5	5	5	5
Built Environment & Landscapes	3.1	14.8%	10	7	10	8	8	8	10	10	10	7	7	7	7	7	7
Biological Resources	3.2	15.3%	10	10	10	10	10	10	10	10	10	10	10	10	10	10	10
Wild Life, Botany, Wetlands	3.7	17.5%	10	10	10	10	10	10	10	10	10	10	10	10	10	10	10
Fisheries	3.3	16.0%	10	10	10	10	10	10	10	10	10	10	10	10	10	10	10
Community Impacts	4.3	20.8%	10	4	10	4	7	9	10	10	8	3	3	4	0	8	6
Parks - Section 4(f)	3.1	14.8%	10	4	9	9	9	9	9	9	10	0	10	10	10	10	7
Visual Resources	3.9	18.5%	10	10	9	9	9	9	7	9	4	1	4	3	0	3	2
Noise	3.2	15.2%	10	10	7	6	6	6	7	5	5	4	4	0	0	5	5
Total Unweighted Score			60	46.5	54	46	49	51	52	50.5	43.5	34	27	33	26	42	36
Total Weighted Score			10.0	7.6	9.1	7.5	8.1	8.5	8.7	8.5	7.2	5.4	4.4	5.3	3.9	6.9	5.9
Total Calibrated Score (10 High)			10.0	7.6	9.1	7.5	8.1	8.5	8.7	8.5	7.2	5.4	4.4	5.3	3.9	6.9	5.9



HEALDSBURG AVENUE BRIDGE PROJECT - An Investment In Public Safety



Healdsburg Avenue Bridge Project Process



RIGHT-OF-WAY
Criteria
Homes Impacted
Commercial Buildings Impacted
Public Lands Required (ac)
Private Vacant Land (ac)
Relocation Assistance

Right-of-Way Impacts		
Impacts	Point Value	
	Structures/Relocation	Acreage
0	10	10
1	7	8
2	4	6
3	0	4
4	0	1
>4	0	0



HEALDSBURG AVENUE BRIDGE PROJECT - An Investment In Public Safety



Healdsburg Avenue Bridge Project Process



Right-of-Way Rating Matrix

Criteria	Categorical Weighing		RIGHT-OF-WAY														
			Concept No.														
			1A	1B	2A	2B	2C	2D	2E	3A	3B	4A	4B	4C	4D	5A	5B
Homes Impacted	3.4	21%	10.0	10.0	10.0	10.0	10.0	10.0	10.0	10.0	10.0	0.0	0.0	10.0	0.0	10.0	10.0
Commercial Buildings Impacted	3.3	20%	10.0	10.0	10.0	10.0	10.0	10.0	10.0	10.0	0.0	0.0	10.0	10.0	0.0	0.0	0.0
Public Lands Required (ac)	3.6	22%	10.0	10.0	10.0	10.0	10.0	10.0	10.0	8.0	8.0	10.0	8.0	10.0	8.0	8.0	8.0
Private Land (ac)	2.2	13%	10.0	10.0	10.0	10.0	10.0	10.0	10.0	8.0	8.0	4.0	8.0	0.0	0.0	8.0	8.0
Relocation Assistance	4.0	24%	10.0	10.0	10.0	10.0	10.0	10.0	10.0	0.0	0.0	0.0	0.0	4.0	0.0	0.0	4.0
Total Unweighted Score			50.0	50.0	50.0	50.0	50.0	50.0	50.0	26.0	26.0	14.0	26.0	34.0	8.0	26.0	30.0
Total Weighted Score			10.0	10.0	10.0	10.0	10.0	10.0	10.0	4.9	4.9	2.7	4.8	7.2	1.8	4.9	5.8
Total Calibrated Score (10 High)			10.0	10.0	10.0	10.0	10.0	10.0	10.0	4.9	4.9	2.7	4.8	7.2	1.8	4.9	5.8



HEALDSBURG AVENUE BRIDGE PROJECT - An Investment In Public Safety



Healdsburg Avenue Bridge Project Process



CONSTRUCTABILITY	
Criteria	
Traffic Handling	
Ped/Bicycle Access	
Equipment Accessability	
Adequate Staging Areas	
Veterans Beach Impacts	
Temporary Utility Relocations*	

Constructability Scoring		
Improvement Phasing (structure, street, utility)	Ped/Bike/Beach Access	Point Value
Readily	Access Maintained	10
Limited	Access Limited	7
Minimal (or minor)	Access Restricted	4
None	Access Eliminated	0



HEALDSBURG AVENUE BRIDGE PROJECT - An Investment In Public Safety



Healdsburg Avenue Bridge Project Process



Constructability Rating Matrix

CONSTRUCTABILITY																
Criteria	Categorical Weighing	Concept No.														
		1A	1B	2A	2B	2C	2D	2E	3A	3B	4A	4B	4C	4D	5A	5B
Traffic Handling	3.3 16%	10	10	7	7	7	7		4	4	10	10	10	10	4	4
Ped/Bicycle Access	2.9 14%	10	10	7	7	7	7		4	4	10	10	10	10	4	4
Equipment Accessibility	3.0 14%	10	10	7	7	7	7		4	4	4	4	7	7	4	4
Adequate Staging Areas	2.8 13%	10	10	7	7	7	7		4	4	4	4	7	7	0	0
Veterans Beach Impacts	3.4 16%	10	10	7	7	7	7		0	4	7	4	7	7	7	4
Construction Duration	2.8 13%	10	10	7	7	7	7		7	7	4	4	0	0	4	4
Temporary Utility Relocations*	2.8 13%	10	10	7	7	7	7		0	0	7	7	7	7	0	0
Total Unweighted Score	70 70	70	70	49	49	49	49	0	23	27	46	43	48	48	23	20
Total Weighted Score		10.0	10.0	7.0	7.0	7.0	7.0	0.0	3.2	3.9	6.7	6.2	6.9	6.9	3.4	2.9
Total Calibrated Score (10 High)		10.0	10.0	7.0	7.0	7.0	7.0	0.0	3.2	3.9	6.7	6.2	6.9	6.9	3.4	2.9



HEALDSBURG AVENUE BRIDGE PROJECT - An Investment In Public Safety



Healdsburg Avenue Bridge Project Process



DESIGN STANDARDS
Criteria
Bridge Structure Standards
Current Seismic
AASHTO Structural
AASHTO Geometric
L.R.F.D. Design Methods
Roadway Standards
Travel Lane Width
Shoulder Width
Height Clearance
Caltrans Bicycle Facility
Other Standards:
FHWA Scour Criteria
FHWA Hydraulic Criteria

Design Standards	
Level of Conformity	Point Value
Fully Conforms	10
Minor Deviation	7
Acceptable Deviation	4
Un-acceptable Deviation	0



HEALDSBURG AVENUE BRIDGE PROJECT - An Investment In Public Safety



Healdsburg Avenue Bridge Project Process



Design Standards Rating Matrix

DESIGN STANDARDS																	
Criteria	Categorical Weighing		Concept No.														
			1A	1B	2A	2B	2C	2D	2E	3A	3B	4A	4B	4C	4D	5A	5B
Bridge Structure Standards																	
Current Seismic	4.8	11.2%	0	0	10	10	10	10	10	10	10	10	10	10	10	10	10
AASHTO Structural	4.7	11.1%	0	0	7	7	7	7	7	7	10	10	10	10	10	10	10
L.R.F.D. Design Methods	4.7	11.1%	0	0	4	4	4	4	4	10	10	7	7	7	7	7	7
Roadway Standards																	
Travel Lane Width	4.0	9.4%	0	0	0	10	10	10	10	10	10	10	10	10	10	10	10
Shoulder Width	3.6	8.5%	0	0	0	10	10	10	10	10	10	10	10	10	10	10	10
Height Clearance	3.8	9.1%	0	0	4	4	4	4	10	10	10	10	10	10	10	10	10
Caltrans Bicycle Facility	3.5	8.3%	0	10	0	4	4	7	10	10	10	10	10	10	10	10	10
Other Standards:																	
FHWA Scour Criteria	4.5	10.6%	0	0	7	7	7	7	7	10	10	7	7	7	7	10	10
FHWA Hydraulic Criteria	4.5	10.6%	0	0	10	10	10	10	10	10	10	10	10	10	10	10	10
<i>Total Unweighted Score</i>			0	10	42	66	66	69	78	90	90	84	84	84	84	87	87
<i>Total Weighted Score</i>			0.0	0.8	4.5	6.6	6.6	6.9	7.7	9.0	9.0	8.3	8.3	8.3	8.3	8.6	8.6
Total Calibrated Score (10 High)			0.0	0.9	5.0	7.4	7.4	7.7	8.5	10.0	10.0	9.3	9.3	9.3	9.3	9.6	9.6



HEALDSBURG AVENUE BRIDGE PROJECT - An Investment In Public Safety



Healdsburg Avenue Bridge Project Process



COST																	
Criteria			Concept No.														
			1A	1B	2A	2B	2C	2D	2E	3A	3B	4A	4B	4C	4D	5A	5B
Bridge/Roadway Improvement Costs	\$0	\$200	\$7,400	\$6,715	\$6,715	\$7,165	-	\$22,890	\$13,790	\$13,415	\$14,535	\$24,465	\$19,855	\$15,950	\$14,750		
Right of Way Costs	\$0	\$0	\$0	\$0	\$0	\$0	-	\$2,170	\$2,170	\$6,990	\$2,750	\$3,970	\$21,440	\$2,550	\$2,460		
Project Engineering and Administrative Costs	\$1,000	\$1,280	\$4,670	\$4,560	\$4,560	\$4,630	-	\$7,710	\$4,830	\$4,770	\$4,940	\$8,250	\$6,700	\$5,150	\$4,970		
TOTAL CAPITAL COST (\$1000's)	\$1,000	\$1,480	\$12,070	\$11,275	\$11,275	\$11,795	-	\$32,770	\$20,790	\$25,175	\$22,225	\$36,685	\$47,995	\$23,650	\$22,180		
LIFE CYCLE MAINTENANCE COST (\$1000's)	\$0	\$0	\$5,300	\$5,300	\$5,300	\$5,300	-	\$0	\$0	\$0	\$0	\$0	\$0	\$0	\$0		
TOTAL COST (\$1000's)	\$1,000	\$1,480	\$17,370	\$16,575	\$16,575	\$17,095	-	\$32,770	\$20,790	\$25,175	\$22,225	\$36,685	\$47,995	\$23,650	\$22,180		
Total Calibrated Score (10 High)	10.0	10.0	9.5	10.0	10.0	9.7	0.0	5.1	8.0	6.6	7.5	4.5	3.5	7.0	7.5		



HEALDSBURG AVENUE BRIDGE PROJECT - An Investment In Public Safety



Healdsburg Avenue Bridge Project Process



Transportation Operations	
Prime Study Intersections Peak Hour Level of Service (LOS)	
Healdsburg Ave & Bailhache	
Healdsburg Ave & Veterans Park Entrance	
Healdsburg Ave & Front/Kennedy	
Healdsburg Ave (Central Healdsburg) & NB 101 Off-ramp	
Front Street/Mason/First Street	
Public Transportation	
Public Transit and School Bus Operations	
Bicycle Facilities	
Bicycle Facilities	
Pedestrian Facilities	
Pedestrian Facilities	

Traffic Operations	
Level of Impact	Point Value
Substantial	10
Moderate	7
Minimal (or minor)	4
No Change	0

LOS Operations Point System	
Level of Service	Point Value
A	10
B	10
C	7
D	3
E	0
F	0

Public Transit/Bicycle /Pedestrian Point System	
Quality of Service	Point Value
Public Transit/School Bus Service	
Full Access	10
Limited Access	5
No Access	0
Bicycle/Pedestrian Facilities	
Full Access	10
Limited Access	5
No Access	0



HEALDSBURG AVENUE BRIDGE PROJECT - An Investment In Public Safety



Healdsburg Avenue Bridge Project Process



Transportation Operations Rating Matrix

Design Year 2035 - Transportation Operations																	
Prime Study Intersections Peak Hour Level of Service (LOS)	Categorical		Concept No.														
	4.17	25%	1A	1B	2A	2B	2C	2D	2E	3A	3B	4A	4B	4C	4D	5A	5B
Healdsburg Ave & Bailhache			D	A	D	C	B	D	D	D	D	D	D	B	A	D	D
Healdsburg Ave & Veterans Park Entrance			C	A	C	B	B	C	C	C	C	C	C	A	A	C	C
Healdsburg Ave & Front/Kennedy			F	F	F	D	F	F	F	C	C	A	A	C	C	A	A
Healdsburg Ave (Central Healdsburg) & NB 101 Off-ramp			C	F	C	C	C	C	C	C	C	C	C	C	C	C	C
Front Street/Mason/First Street			C	C	C	B	C	C	C	C	C	C	C	C	C	C	C
LOS Score			5.9	6.6	5.9	9.0	8.3	5.9	5.9	7.6	7.6	8.3	8.3	10.0	10.0	8.3	8.3
Public Transportation		4.25	26%														
Public Transit and School Bus Operations			0.0	0.0	5.0	5.0	5.0	5.0	10.0	10.0	10.0	10.0	10.0	5.0	10.0	10.0	10.0
Public Transit Score			0.0	0.0	5.0	5.0	5.0	5.0	10.0	10.0	10.0	10.0	10.0	5.0	10.0	10.0	10.0
Bicycle Facilities		3.71	23%														
Bicycle Facilities			0.0	10.0	0.0	5.0	5.0	5.0	10.0	10.0	10.0	10.0	10.0	10.0	10.0	10.0	10.0
Bicycle Facility Score			0.0	10.0	0.0	5.0	5.0	5.0	10.0	10.0	10.0	10.0	10.0	10.0	10.0	10.0	10.0
Pedestrian Facilities		4.29	26%														
Pedestrian Facilities			0.0	10.0	0.0	5.0	5.0	5.0	10.0	10.0	10.0	10.0	10.0	10.0	10.0	10.0	10.0
Pedestrian Facility Score			0.0	10.0	0.0	5.0	5.0	5.0	10.0	10.0	10.0	10.0	10.0	10.0	10.0	10.0	10.0
Total Unweighted Score			5.9	26.6	10.9	24.0	23.3	20.9	35.9	37.6	38.3	38.3	35.0	40.0	38.3	38.3	
Total Weighted Score			1.5	6.5	2.8	6.0	5.8	5.2	8.9	9.4	9.4	9.6	9.6	8.7	10.0	9.6	9.6
Calibrated Score (10 High)			1.5	6.5	2.8	6.0	5.8	5.2	8.9	9.4	9.4	9.6	9.6	8.7	10.0	9.6	9.6



HEALDSBURG AVENUE BRIDGE PROJECT - An Investment In Public Safety



Healdsburg Avenue Bridge Project Process



City of Healdsburg Funds Required	Rating Scale
<\$1500K	10
\$2000k	9
\$2500k	7
\$3000k	5
\$3300k	3
\$3600k	2
\$4000k	1
>\$4000K	0

Potential Funding Sources

Highway Bridge Program

Grant Programs

- Proposition 84 – State Parks
- Recreation Trails
- Land and Water Conservation
- Re-authorization of SAFETEA-LU
- Transp Enhance–Historic Preservation
- Bicycle Transportation Account
- Save Americas Treasures
- Preserve America Grant Program



HEALDSBURG AVENUE BRIDGE PROJECT - An Investment In Public Safety



Healdsburg Avenue Bridge Project Process



City of Healdsburg Financial Responsibility Matrix

Funding Capability-City Contribution (Funds in 1000's)															
City of Healdsburg Funds Required	Concept No.														
	1A	1B	2A	2B	2C	2D	2E	3A	3B	4A	4B	4C	4D	5A	5B
City Funds Required	\$1,000	\$1,468	\$1,992	\$1,901	\$1,901	\$1,961	-	\$3,759	\$2,385	\$2,451	\$2,112	\$19,677	\$32,425	\$2,468	\$1,583
Rating Score	10	10	9	9	9	9		1	7	7	7	0	0	7	9



HEALDSBURG AVENUE BRIDGE PROJECT - An Investment In Public Safety



Healdsburg Avenue Bridge Project Process



SUMMARY CATEGORICAL RANKING - WEIGHTED SCORING																
Criteria	Relative Weighing	Conc														
		1A	1B	2A	2B	2C	2D	2E	3A	3B	4A	4B	4C	4D	5A	5B
Historic Preservation	1.00	10.0	10.0	10.0	10.0	10.0	10.0	2.0	0.0	0.0	5.0	6.0	10.0	10.0	7.0	6.0
Public Safety	1.47	0.0	6.2	4.0	1.5	4.0	5.5	14.7	14.7	14.7	14.7	13.6	11.4	12.5	13.6	14.7
Environmental Impacts	1.22	12.2	9.3	11.0	9.1	9.9	10.4	10.6	10.4	8.8	6.5	5.4	6.5	4.8	8.4	7.2
Right-of-way Acquisition	1.09	10.9	10.9	10.9	10.9	10.9	10.9	10.9	5.3	5.3	3.0	5.2	7.9	1.9	5.3	6.4
Constructability	1.11	11.1	11.1	7.8	7.8	7.8	7.8	0.0	3.6	4.3	7.4	6.9	7.7	7.7	3.8	3.3
Design Standards	1.00	0.0	0.9	5.0	7.4	7.4	7.7	8.5	10.0	10.0	9.3	9.3	9.3	9.3	9.6	9.6
Cost	1.12	11.2	11.2	10.6	11.2	11.2	10.8	-	5.6	8.9	7.3	8.3	5.0	3.9	7.8	8.3
Transportation Operations	1.31	2.0	8.6	3.7	7.9	7.7	6.9	11.8	12.3	12.3	12.6	12.6	11.4	13.7	12.6	12.6
Funding Capability (City Contribution)	1.26	12.6	12.6	11.3	11.3	11.3	11.3	-	1.3	8.8	8.8	8.8	0.0	0.0	8.8	11.3
Total Weighted Score		69.9	80.8	74.4	77.0	80.1	81.2	58.5	63.2	73.0	74.5	76.0	69.2	63.2	76.9	79.3

Purpose and Need Scoring
 The project Purpose and Need, is defined in the Caltrans "Project Development Procedures Manual" which indicates that all projects, during the project initiation process shall include purpose and need based upon the needs and objectives identified in the planning process. It is very possible for concepts which do not conform to the project Purpose and Need to receive significant scoring through the criteria rating process; however, the concepts ability to provide the results identified in the Purpose and Need statements cannot be overlooked and must be included within the process. Often the Purpose and Need is used as an absolute disqualifier; if a concept is not in step with the Purpose and Need it is eliminated. We have chosen to provide an adjustment for the Purpose and Need to provide an overall ranking which considers the Purpose and Need but does not disqualify.

Address Public Safety	N	N	Y	Y	Y	Y	Y	Y	Y	Y	Y	Y	Y	Y	Y	Y
Consistent with General Plan	N	N	N	N	N	N	N	Y	Y	Y	Y	Y	Y	Y	Y	Y
Facilitate Goods Movement	N	N	N	N	N	N	N	Y	Y	Y	Y	Y	Y	Y	Y	Y
Improve Public Transportation Opportunities	N	N	N	N	N	N	N	Y	Y	Y	Y	Y	Y	Y	Y	Y
Minimize Neg impacts to Veterans Memorial Park	Y	Y	Y	Y	Y	Y	Y	Y	Y	Y	Y	N	Y	Y	Y	Y
Enhance Ped and Bicycle Access and Facilities	N	N	N	N	N	N	N	Y	Y	Y	Y	Y	Y	Y	Y	Y
Project Purpose and Need Adjustment	0.22	0.28	0.36	0.39	0.39	0.43	0.75	0.98	0.97	1.00	0.88	0.76	0.76	0.92	0.93	
Total Ranking Score	15.39	22.25	26.52	29.70	30.89	34.61	43.73	62.08	71.13	74.55	67.21	52.78	48.17	70.9	73.57	



HEALDSBURG AVENUE BRIDGE PROJECT - An Investment In Public Safety



4

5

1

3

2

Healdsburg Avenue Bridge Project Process



PUBLIC COMMENT



HEALDSBURG AVENUE BRIDGE PROJECT - An Investment In Public Safety

